



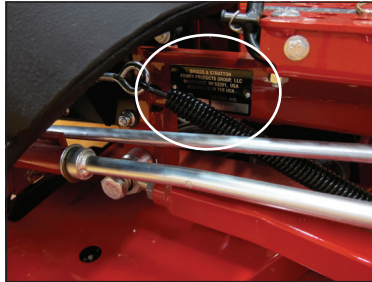
# How to Find Your Mower's Part/Serial Number

## Zero-Turn Mowers

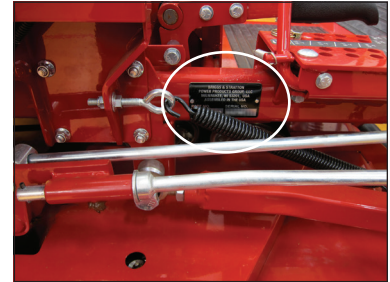
Facing the front, the serial number plate is located on the left hand side. The plate is attached to the frame about mid way and is normally above the discharge chute. Sometimes the plate will be under the gas tank.



**IS® 5100Z**



**IS® 3100Z**



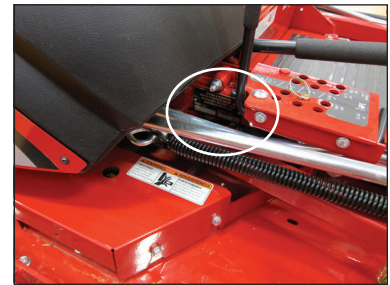
**IS® 3100Z PROPANE**



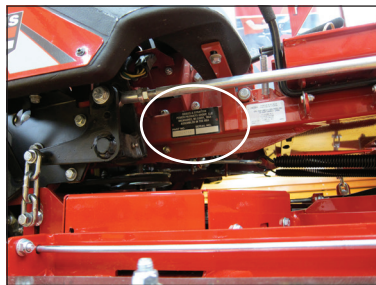
**IS® 2500Z**



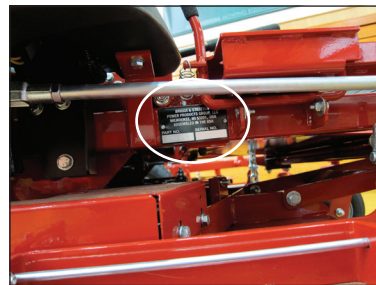
**IS® 2100Z**



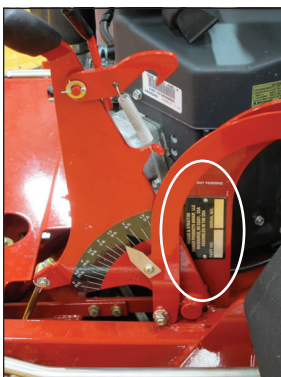
**IS® 2000Z**



**IS® 700Z**



**IS® 600Z**



**Evolution™**

The plate is located behind the deck lift lever on the right and might be hidden.

The plate is located under the seat.



**F800X**



# How to Find Your Mower's Part/Serial Number

## Three-Wheel Mowers



The serial number plate is on the center column behind the engine.

**ProCut™ S**

## Walk-Behind Mowers



**FW35**

Plate is located on the engine deck.



**ComfortControl™ DD**

The serial number plate is located on the right of the mower, in the back, next to the controls when looking at it from the front.



**HydroCut™**

The plate is located on the back corner of the right side of the mower when facing it from the front.